

Accessing and Moving Stored/Calibrated Lenses in HU3

This guide describes how to set up and manage lens lists for installation on and transfer between a PC and HU3. You can use this software to back up a set of calibrated lenses to a database file stored on the PC, and transfer those lenses to other HU3s.

Note: The lens management software requires a PC with Microsoft Access installed.

HU3 SW V2.16 introduced Iris and Zoom lens mapping, so **HU3s with V2.16 and newer require the latest database program version (3.03)** to properly manage lenses with I and Z calibrations. HU3 SW V2.00 – V2.15C should use database program V2.1.

Hardware and Software Setup

To be able to access the stored lenses from the HU3, you'll need the following:

1. HU3 with Serial-LEMO cable
2. Serial-USB adapter for connection to PC. We highly recommend and officially only support this EasySYNC adapter: <http://www.easysync-ltd.com/product/526/es-u-1001-r10.html>
3. PC (no Mac support at this time) with the Preston Upgrade CD installed: <http://prestoncinema.com/Upgrades/PrestonUpgradeCD.zip>
4. PC with Preston Lens List Database software.
 - a. For HU3 SW 2.16 (April 2015) and newer: <http://prestoncinema.com/Upgrades/Lens%20Database%203.03.zip>
 - b. For HU3 SW 2.00 – 2.15C: http://www.prestoncinema.com/Upgrades/LensDatabase2_1.zip

If you haven't in the past, download the Upgrade CD from the link above, and run setup.exe. This will install some necessary DLL files the upgrade program needs. This CD used to be required for normal firmware updates, but now it's only needed to use the lens database program.

Lens Database V3.03 Setup

Download the lens database .zip file from the link above and run setup.exe. This installs the lens database program and requires both Microsoft Access and the Preston Upgrade CD be installed first.

That's it! The setup utility should install everything you need. To launch the program, click the installed file "Lens Database 3.03". Note that even though the title bar of the program shows "3.02", it's actually version 3.03.

Lens Database V2.1 Setup (complicated, recommend updating HU3 firmware to use 3.03 above)

V2.1 has a more complicated setup procedure, so we recommend updating the HU3 software to the latest version (before attempting to connect to the database program) to take advantage of V3.0 lens database software. To continue with V2.1, begin by following the download link

above. The file download will start automatically from the link and will download as a .zip file. Once the file has downloaded, unzip it and follow the folder tree until you get to setup.exe: *Document and Settings -> Mirko -> Desktop -> Lens Database 2.1 -> SETUP.EXE*. Double click on *SETUP.EXE* to begin the installation process. Follow the prompts and choose “Typical” for the install mode. Once the installation is complete, find “*Preston Lens Database 2*” in your Start Menu. If the program opens normally, you are ready to connect to the HU3 and can skip the next paragraph.

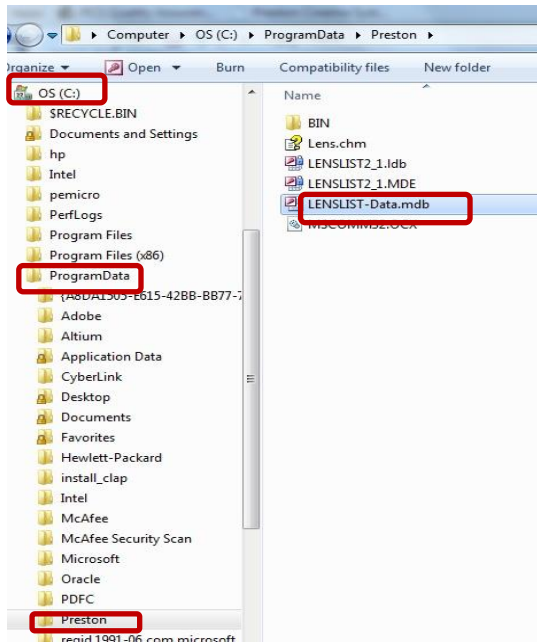


Figure 1 - Copying the Lens Database File

If you are presented with an error that says “Could not find file ‘*C:\Program Files\Preston\LENSLIST-Data.mdb*’” there is a small workaround to correctly setup the program. You must copy the database file into the correct directory before the program will boot up. Navigate your file explorer to *C:\ProgramData\Preston* and copy the file “*LENSLIST-Data.mdb*”. Next, go to the folder *C:\Program Files* and create a new folder there called “*Preston*”. Paste the copied file into the “*Preston*” folder on *C:\Program Files* (note – make sure you create the “*Preston*” folder in *Program Files* and NOT *Program Files (x86)*). Once the database file is in the correct directory, restart the lens database program. It should launch normally. Press F1 to view the Help file, which contains instructions for utilizing the various features of the program.

Retrieving the Stored Lenses from the HU3

Power on the HU3 normally and connect the serial cable to the HU3 and to the PC. The picture of the HU3 indicates that the program correctly recognized the connection with the HU3. To load the lenses from the HU3 onto the PC, press the left arrow (highlighted in red below) next to the HU3 image. This loads the lenses from the HU3 to the Work List of the database program.

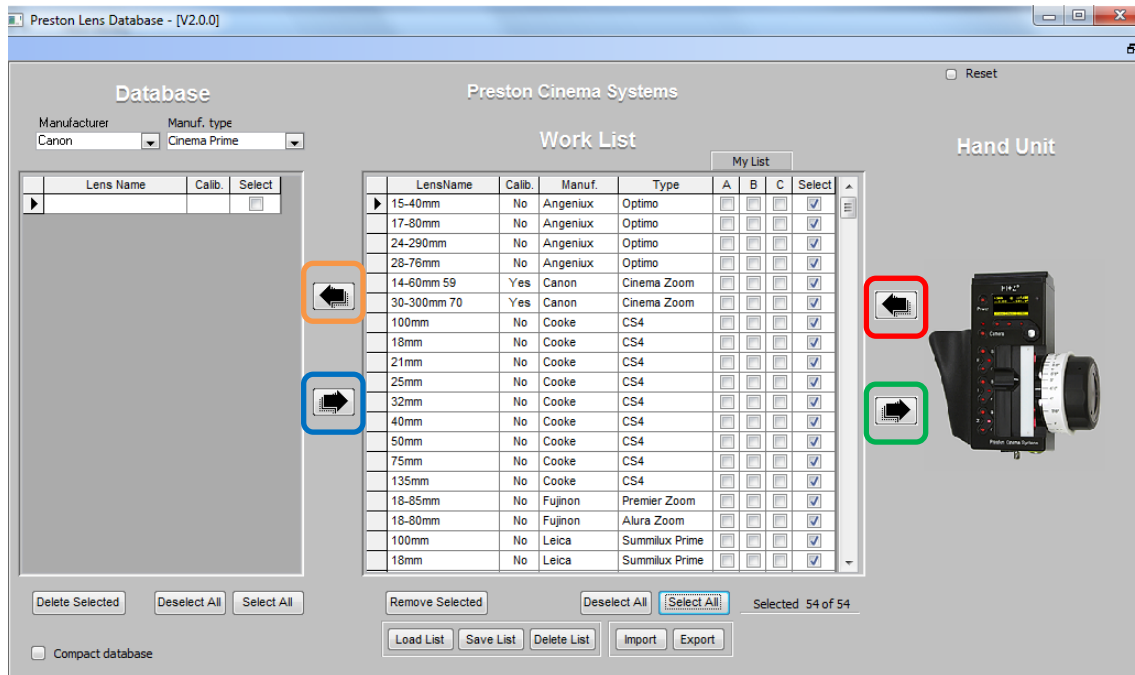


Figure 2 - Lens Database Program Interface

Sending Lenses to the HU3

Connect the HU3 you wish to transfer lenses to as before. When the HU3 image appears in the database program, the connection has been established. Select all the lenses in the Work List you would like to send to the HU3. These lenses can be loaded directly from another HU3 or can be imported from a file. Press the right arrow (notated in green above) to send the selected lenses to the connected HU3. Verify on the HU3 that the selected lenses have been successfully transferred.

Backing Up and Loading Lens Lists

Once the lenses have been imported from the HU3, select the lenses you wish to save in the Work List and press "Export". This will save those lenses in a custom .pcl file that can be stored, loaded (by pressing "Import") and transferred between HU3s. Once the list is imported, select the lenses you wish to transfer and press the right arrow in green above. Verify that the correct lenses were sent to the HU3.

The lens list can also be saved as a database for later retrieval. Select the lenses of interest in the Work List and press the right arrow (in orange above) to send that list to the database. Pressing "Save List" will save those lenses now in the database to a custom list that can be re-loaded by pressing right arrow highlighted in blue above.

Troubleshooting

If the program doesn't recognize the HU3, it will show a question mark in place of the HU3 image. This is typically due to problems with the USB-serial adapter. Here are instructions for configuring the EasySYNC adapter we support to mitigate connection issues:

- 1) Go to Device Manager and expand the list "Ports (COM & LPT)".
- 2) Look for a device named "USB Serial PORT (COMX)". This is the USB-serial adapter.
It must be in COM ports 1-4 for the program to access properly.
- 3) Right-click that device and select Properties.
- 4) In the Port Settings tab, click the Advanced... button.
- 5) If the COM port is not in the range of 1-4, select an unused port in the dropdown next to COM Port Number.
- 6) In the BM Options area, change the Latency Timer (msec) dropdown value to 1.
- 7) Make sure both dropdowns in the Timeouts area are set to 0.
- 8) Click OK to exit the Advanced Settings window, then click OK again to exit the Properties window.
- 9) Restart your computer if prompted.

Different USB-serial adapters won't have these same adjustment settings available in the Device Manager, so we can't offer support for those adapters.